

# Keep track of Respiratory Syncytial Virus with Ovation Pathogen Testing Data



## Diverse US Coverage

Sourced from labs across the country, Ovation data represents an array of patients from diverse racial and ethnic backgrounds.



## Exclusive Ovation Network

Enhance your analyses with Ovation Pathogen Testing Data which is not found in other data sources outside the Ovation LIMS network.



## Consent at Every Step

Testing samples are consented and de-identified for research purposes as part of the clinical workflow ensuring patient privacy and easy access to the data for your bioinformatics team.

## Ovation RSV Testing Data Details

- Our RSV Testing Data includes ~720K retrospective tests with 10,000 new tests per month
- Delivery of retrospective data within 2 weeks of contracting with data refreshed weekly
- Patient demographics, test results & viral load
- Geographic representation reported at Zip3
- Datavant tokenization with easy linkage to phenotypic data
- Create your own dashboards for customized surveillance

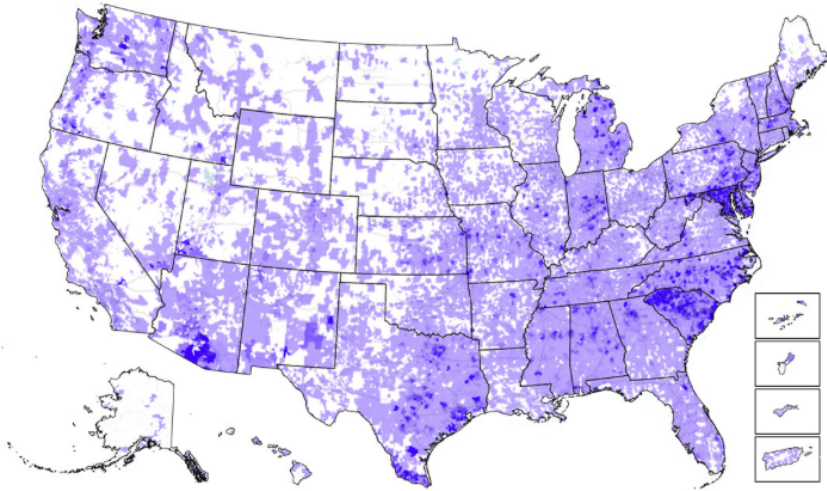
## Add Ons

Optional linkage to in-house claims data (60-70% overlap)

NPI variable

Services to link to outside phenotypic data

## Broad National Coverage of RSV Testing Data



Ovation provides access to **Diverse and Representative Populations** with RSV Infections:

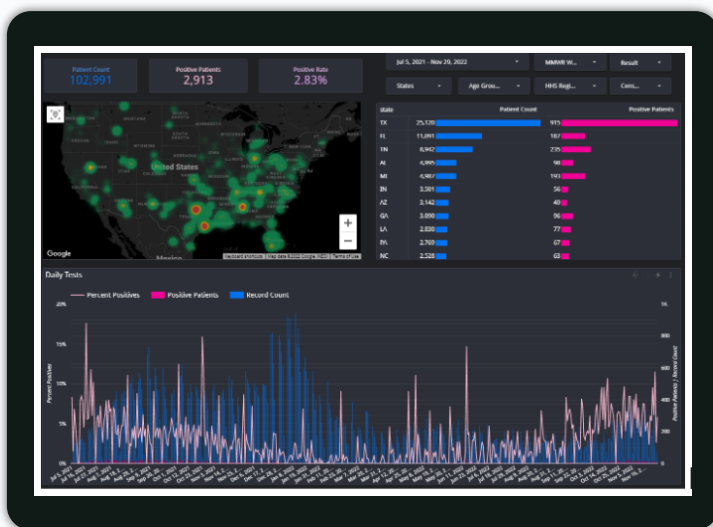
**16%** African American

**15%** Hispanic or Latino

Pediatric positive rate of **4.8%** vs. **0.8%** for adults

### Wide Range of Use Cases

Ovation RSV Testing Data can be used to enhance your drug development program by enabling **efficient patient recruitment**, **tracking disease variants** and **general disease surveillance**.



### Data can be refreshed hourly

for near real time updates of patient testing and positive counts, geographic dispersal and trends over time.